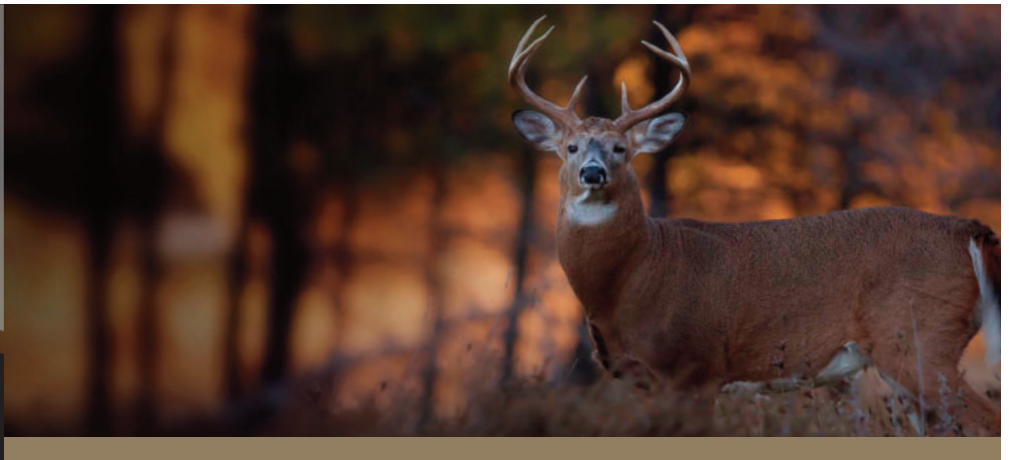


# WILDLIFE GENETICS

SOW WITH US,  
HARVEST THE WILD



[www.seedway.com](http://www.seedway.com)

## TOWER OF LEAVES

### Key Components

Tower Of Leaves is a late maturing conventional, true forage soybean known for its excellent forage tonnage and height. It's an improved food plot soybean that exhibits excellent nutritional qualities. Tower Of Leaves soybeans are easy to grow and can be planted in varying soils types.

### Benefits

- True forage soybean
- Large leaf area
- Highly palatable
- Drought tolerant
- Season long food source
- High protein
- Excellent total digestible nutrients

### Planting Guide

- Soil sample - pH should be 6-7
- Apply fertilizer and lime as needed
- Prior to planting inoculate seed for ideal nodulation
- Plant when soil is 50° or higher - April to June
- Seeding depth 1/4" to 1/2" in firm seed bed
- Seeding rate per acre - 100,000 to 140,000 seeds



Dr. Thomas Devine (pictured above)  
with Tower Of Leaves



HALL, NY (800) 836-3710

MIFFLINBURG, PA (800) 338-2137

