

FLUE-CURED TOBACCO

Pelleted with  *Incotec*® Technology





FLUE-CURED TOBACCO

Pelleted with  Incotec® Technology

ZEB JAMES - PVH 1600



*For more information on
SEEDWAY® Tobacco please contact:*

Zeb James

Southeastern US Sales Representative

zjames@seedway.com · (252) 637-8903



To place an order please email tobacco@seedway.com

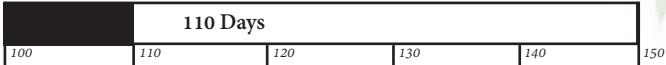
PVH 2310

An early maturing variety and can be harvested much earlier (2 weeks earlier) than varieties like K 326. This variety was bred to help utilize barn space and is recommended to be bud topped. It has a well- developed root system and leaf spacing ideal for mechanical harvesters. PVH 2310 is best for fields that would also be planted in K 326. It is important to remember that this variety has the potential to ripen much faster than what farmers are accustomed to.

TOBACCO MOSAIC VIRUS	RESISTANT
POTATO VIRUS Y	RESISTANT
BLACK SHANK RACE 0	LOW RESISTANCE
BLACK SHANK RACE 1	SUSCEPTIBLE
ROOT-KNOT NEMATODE	RESISTANT
GRANVILLE WILT	LOW RESISTANCE
ROOT SYSTEM	EXCELLENT
HOLDING ABILITY	GOOD
TOBACCO CYST NEMATODE	RESISTANT
CURABILITY	EXCELLENT

Recommended For:
TMV RESISTANCE, EARLY MATURITY, DISEASE FREE FIELDS

AVERAGE DAYS TO HARVEST FROM TRANSPLANT



BRIAN HOWEL - PVH 2310

PVH 1600

This normal cycle hybrid is known for its cured leaf of excellent quality, high productivity, adaptability and good holding ability in the field. PVH 1600 has high tolerance to bacterial wilt and moderate tolerance to Black Shank Race (1). Furthermore, it is resistant to Globodera nematodes and Root-Knot Nematodes Meloidogyne incognita, races 1 and 3, and to Black Shank Race (0).

AVERAGE DAYS TO HARVEST FROM TRANSPLANT				130 Days	
100	110	120	130	140	150
TOBACCO MOSAIC VIRUS			SUSCEPTIBLE		
POTATO VIRUS Y			SUSCEPTIBLE		
BLACK SHANK RACE 0			RESISTANT		
BLACK SHANK RACE 1			MODERATE RESISTANCE		
ROOT-KNOT NEMATODE			RESISTANT		
GRANVILLE WILT			HIGH RESISTANCE		
ROOT SYSTEM			GOOD		
HOLDING ABILITY			GOOD		
TOBACCO CYST NEMATODE			RESISTANT		
CURABILITY			EXCELLENT		

Recommended For: BLACK SHANK RESISTANCE RACE 1, PH GENE, * GRANVILLE WILT

* These recommendations are based on levels of tolerance rather than resistance. Do not expect total resistance in your field.



DEREK BISSETTE - PVH 1600

REID TURNER: BAXLEY, GA - NC71



NC 71

A high yielding hybrid with high resistance to Black Shank Race (0), low tolerance of Granville Wilt, and tolerance to races 1 and 3 of the Southern Root-Knot Nematode. It is consistently high yielding in field trials year after year. Growth patterns are similar to K 326.

AVERAGE DAYS TO HARVEST FROM TRANSPLANT				135 Days
100	110	120	130	140
TOBACCO MOSAIC VIRUS				SUSCEPTIBLE
POTATO VIRUS Y				SUSCEPTIBLE
BLACK SHANK RACE 0				HIGH RESISTANCE
BLACK SHANK RACE 1				LOW RESISTANCE
ROOT-KNOT NEMATODE				RESISTANT
GRANVILLE WILT				LOW RESISTANCE
ROOT SYSTEM				EXCELLENT
HOLDING ABILITY				GOOD
TOBACCO CYST NEMATODE				RESISTANT
CURABILITY				EXCELLENT

Recommended For: PH GENE



K 326

Well known for its quality and excellent curability. It is tolerant to races 1 and 3 of Southern Root-Knot Nematode and Brown Spot. K 326 grades well and is easy to cure and manage.

AVERAGE DAYS TO HARVEST FROM TRANSPLANT					135 Days
100	110	120	130	140	150
TOBACCO MOSAIC VIRUS					SUSCEPTIBLE
POTATO VIRUS Y					SUSCEPTIBLE
BLACK SHANK RACE 0					LOW RESISTANCE
BLACK SHANK RACE 1					LOW RESISTANCE
ROOT-KNOT NEMATODE					RESISTANT
GRANVILLE WILT					LOW RESISTANCE
ROOT SYSTEM					EXCELLENT
HOLDING ABILITY					EXCELLENT
TOBACCO CYST NEMATODE					SUSCEPTIBLE
CURABILITY					EXCELLENT

Recommended For: DISEASE FREE FIELDS

NC 925

A North Carolina State University cultivar with reasonable high yielding capability in combination with Black Shank resistance. This variety is a great option for growers that have a strong need for highly-resistant Black Shank varieties without losing the yielding ability. NC 925 has substantially higher yielding potential than K 346.

AVERAGE DAYS TO HARVEST FROM TRANSPLANT				135 Days	
100	110	120	130	140	150
TOBACCO MOSAIC VIRUS			SUSCEPTIBLE		
POTATO VIRUS Y			SUSCEPTIBLE		
BLACK SHANK RACE 0			RESISTANT		
BLACK SHANK RACE 1			MODERATE RESISTANCE		
ROOT-KNOT NEMATODE			RESISTANT		
GRANVILLE WILT			MODERATE RESISTANCE		
ROOT SYSTEM			GOOD		
HOLDING ABILITY			GOOD		
TOBACCO CYST NEMATODE			SUSCEPTIBLE		
CURABILITY			GOOD		

Recommended For: BLACK SHANK RESISTANCE RACE 1



K 346



K 346

An established variety that performs well. K 346 has resistance to Black Shank and tolerance to Granville Wilt. It is also tolerant to races 1 and 3 of the Southern Root-Knot Nematode.

AVERAGE DAYS TO HARVEST FROM TRANSPLANT		140 Days			
100	110	120	130	140	150
TOBACCO MOSAIC VIRUS		SUSCEPTIBLE			
POTATO VIRUS Y		SUSCEPTIBLE			
BLACK SHANK RACE 0		HIGH RESISTANCE			
BLACK SHANK RACE 1		MODERATE RESISTANCE			
ROOT-KNOT NEMATODE		RESISTANT			
GRANVILLE WILT		MODERATE RESISTANCE			
ROOT SYSTEM		POOR			
HOLDING ABILITY		FAIR			
TOBACCO CYST NEMATODE		SUSCEPTIBLE			
CURABILITY		FAIR			

Recommended For: BLACK SHANK RESISTANCE RACE 1

NC 72

A high yielding, high quality hybrid with high resistance to Black Shank Race (0), moderate tolerance to Granville Wilt, and tolerance to races 1 and 3 of the southern Root-Knot Nematode. It is a little later flowering than K 326. NC 72 is easy to cure and ripens similar to K 326. NC 72 is ideal for mechanical harvesters. Leaves are mostly medium bodied lemon and orange.

AVERAGE DAYS TO HARVEST FROM TRANSPLANT				140 Days	
100	110	120	130	140	150
TOBACCO MOSAIC VIRUS			SUSCEPTIBLE		
POTATO VIRUS Y			SUSCEPTIBLE		
BLACK SHANK RACE 0			HIGH RESISTANCE		
BLACK SHANK RACE 1			LOW RESISTANCE		
ROOT-KNOT NEMATODE			RESISTANT		
GRANVILLE WILT			MODERATE RESISTANCE		
ROOT SYSTEM			FAIR		
HOLDING ABILITY			GOOD		
TOBACCO CYST NEMATODE			RESISTANT		
CURABILITY			EXCELLENT		

Recommended For: PH GENE



ROGER OXENDINE; ROWLAND, NC - NC 72

PVH 1452

A potentially high yielding, high quality hybrid with resistance to Black Shank Race (0) and a high tolerance of Granville Wilt. This variety also has moderate resistance to Black Shank Race (1) and is tolerant to Southern Root-Knot Nematode.

AVERAGE DAYS TO HARVEST FROM TRANSPLANT					
				140 Days	
100	110	120	130	140	150

TOBACCO MOSAIC VIRUS	SUSCEPTIBLE
POTATO VIRUS Y	SUSCEPTIBLE
BLACK SHANK RACE 0	RESISTANT
BLACK SHANK RACE 1	MODERATE RESISTANCE
ROOT-KNOT NEMATODE	RESISTANT
GRANVILLE WILT	HIGH RESISTANCE
ROOT SYSTEM	EXCELLENT
HOLDING ABILITY	GOOD
TOBACCO CYST NEMATODE	RESISTANT
CURABILITY	EXCELLENT

* These recommendations are based on levels of tolerance rather than resistance. Do not expect total resistance in your field.

Recommended For:

BLACK SHANK RESISTANCE RACE 1, PH GENE, GRANVILLE WILT



STEVE THOMAS; SANFORD, NC - PVH 2254

PVH 2254

This hybrid has the potential to be high yielding, excellent quality tobacco. PVH 2254 has high rusticity and adaptability to different types of soil and climate. It is resistant to TMV, Root- Knot Nematode *Meloidagyne incagnita* races 1 and 3, and has high tolerance to Bacterial Wilt. PVH 2254 also has excellent holding ability in the field; it cures easily and tends to produce more leaves compared to traditional cultivators like K 326. To obtain the best results in terms of yield and quality, the plants should be topped with a maximum of 24 leaves.

AVERAGE DAYS TO HARVEST FROM TRANSPLANT					
				140 Days	
100	110	120	130	140	150

TOBACCO MOSAIC VIRUS	RESISTANT
POTATO VIRUS Y	SUSCEPTIBLE
BLACK SHANK RACE 0	SUSCEPTIBLE
BLACK SHANK RACE 1	SUSCEPTIBLE
ROOT-KNOT NEMATODE	RESISTANT
GRANVILLE WILT	HIGH RESISTANCE
ROOT SYSTEM	EXCELLENT
HOLDING ABILITY	EXCELLENT
TOBACCO CYST NEMATODE	SUSCEPTIBLE
CURABILITY	EXCELLENT

Recommended For: *GRANVILLE WILT, TMV RESISTANCE, LATE MATURITY, DISEASE FREE FIELDS

* These recommendations are based on levels of tolerance rather than resistance. Do not expect total resistance in your field.

JOHN & CODY GROSS; SANFORD, NC - PVH 2254



PVH 2343

Excellent quality of cured leaves and high yield potential are the main characteristics of PVH 2343. It is resistant to TMV, Nematodes Meloidogyne Incognita races 1 and 3, and it has a high to moderate level of tolerance to Bacterial Wilt. PVH 2343 has a good number of leaves per plant, excellent holding ability in the field, and is easy to cure. It also stands out for its rusticity and adaptability to different types of soil and climate.



TOBACCO MOSAIC VIRUS	RESISTANT
POTATO VIRUS Y	SUSCEPTIBLE
BLACK SHANK RACE 0	SUSCEPTIBLE
BLACK SHANK RACE 1	SUSCEPTIBLE
ROOT-KNOT NEMATODE	SUSCEPTIBLE
GRANVILLE WILT	HIGH RESISTANCE
HOLDING ABILITY	EXCELLENT
CURABILITY	EXCELLENT

Recommended For: MEDIUM RESISTANCE TO BLACK SHANK AND BACTERIAL WILT

** These recommendations are based on levels of tolerance rather than resistance. Do not expect total resistance in your field.*



PVH 2110



DELEON BASS; CLINTON, NC - PVH 2343

PVH 2110

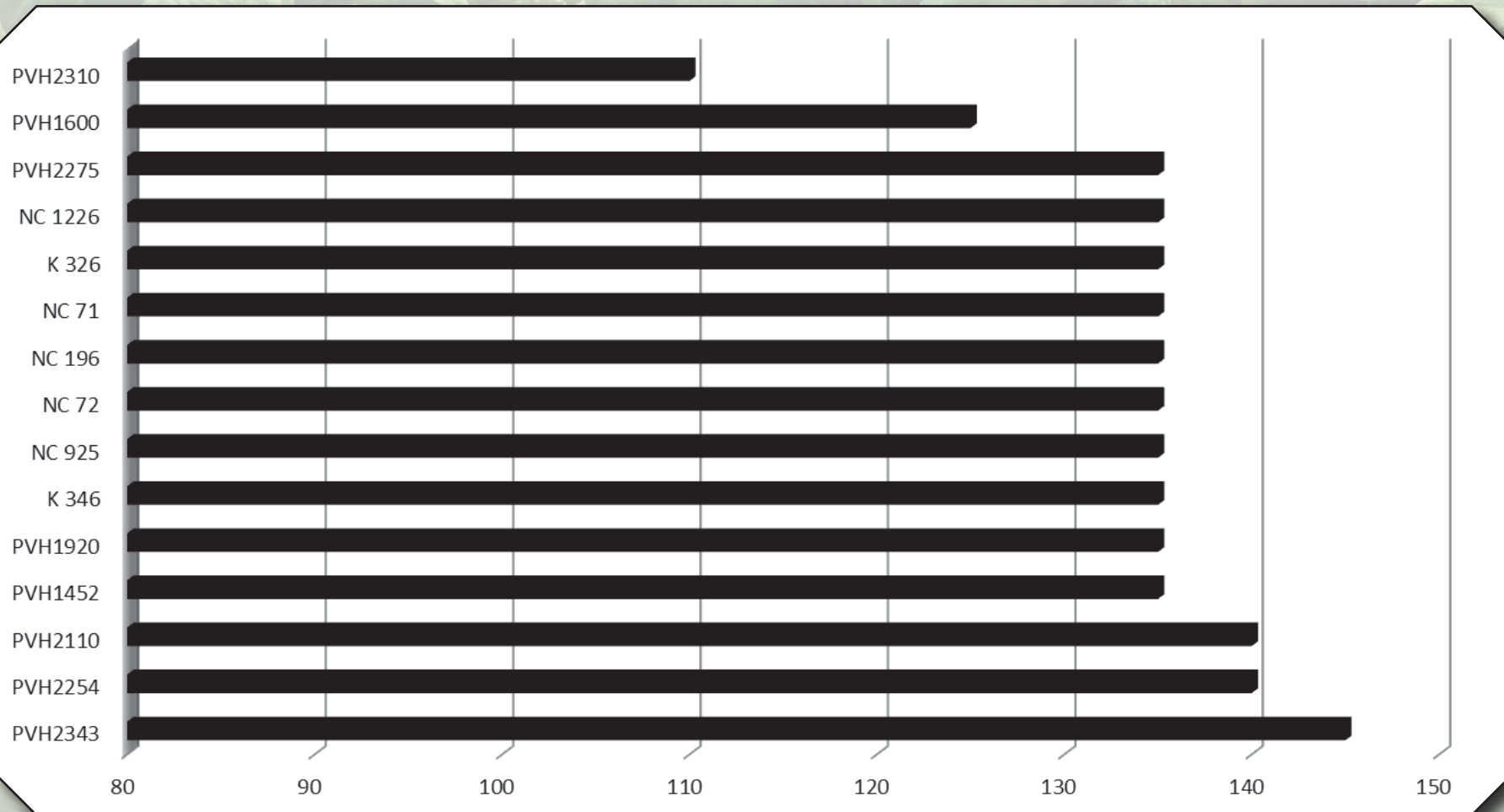
A hybrid with moderate resistant to Bacterial Wilt and Southern Root-Knot Nematode. It has a high yield potential and very good curing characteristics. This variety is a great alternative for growers satisfied with K 326 but seeking potentially higher yields and a bit more of a disease package.



TOBACCO MOSAIC VIRUS	SUSCEPTIBLE
POTATO VIRUS Y	SUSCEPTIBLE
BLACK SHANK RACE 0	LOW RESISTANCE
BLACK SHANK RACE 1	LOW RESISTANCE
ROOT-KNOT NEMATODE	RESISTANT
GRANVILLE WILT	MODERATE RESISTANCE
ROOT SYSTEM	EXCELLENT
HOLDING ABILITY	GOOD
TOBACCO CYST NEMATODE	SUSCEPTIBLE
CURABILITY	EXCELLENT

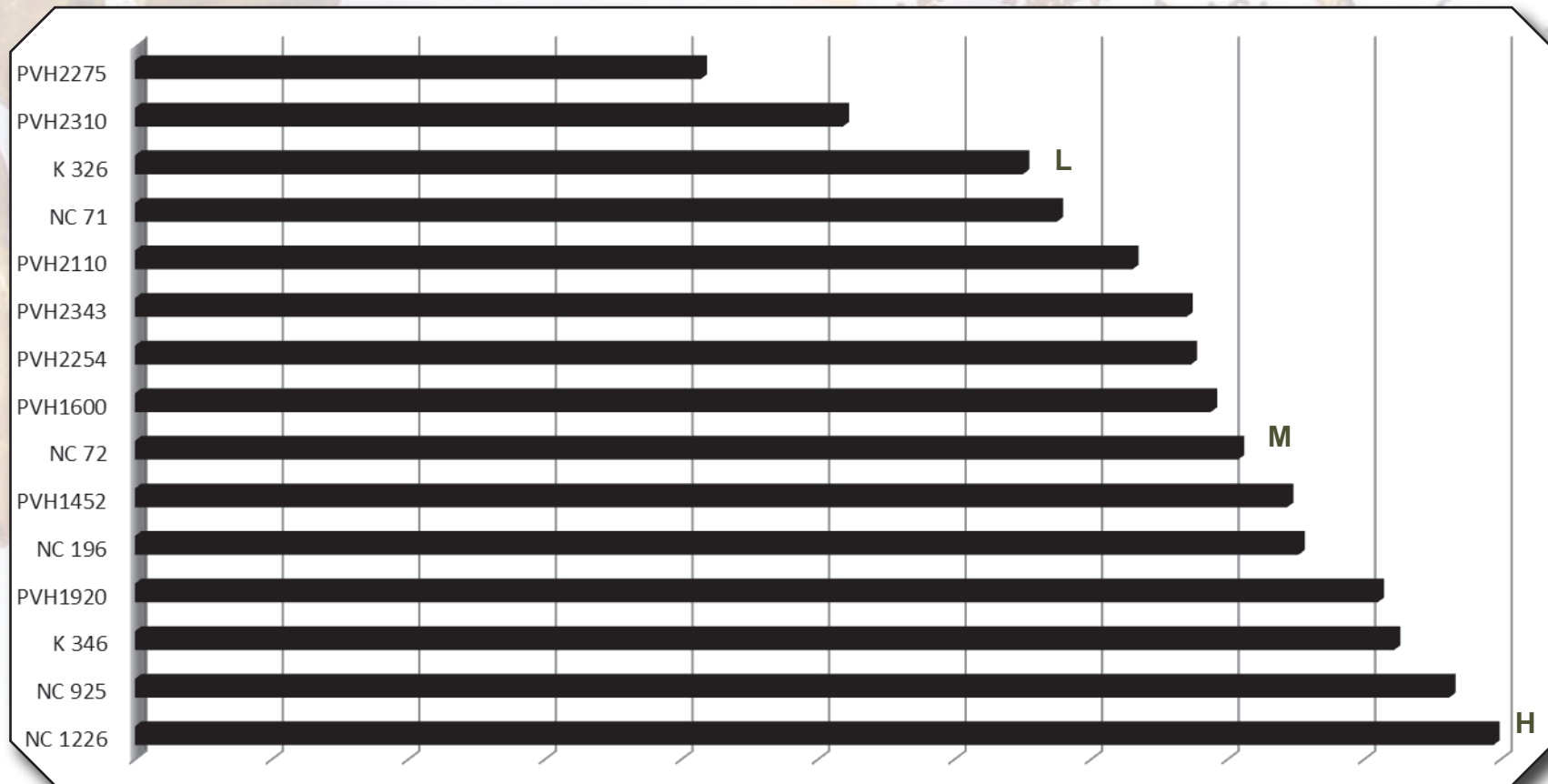
Recommended For: LATE MATURITY AND DISEASE FREE FIELDS

LENGTH VEGETATIVE CYCLE (DAT)



DAT – days after transplant to full harvest // Source: ProfiGen

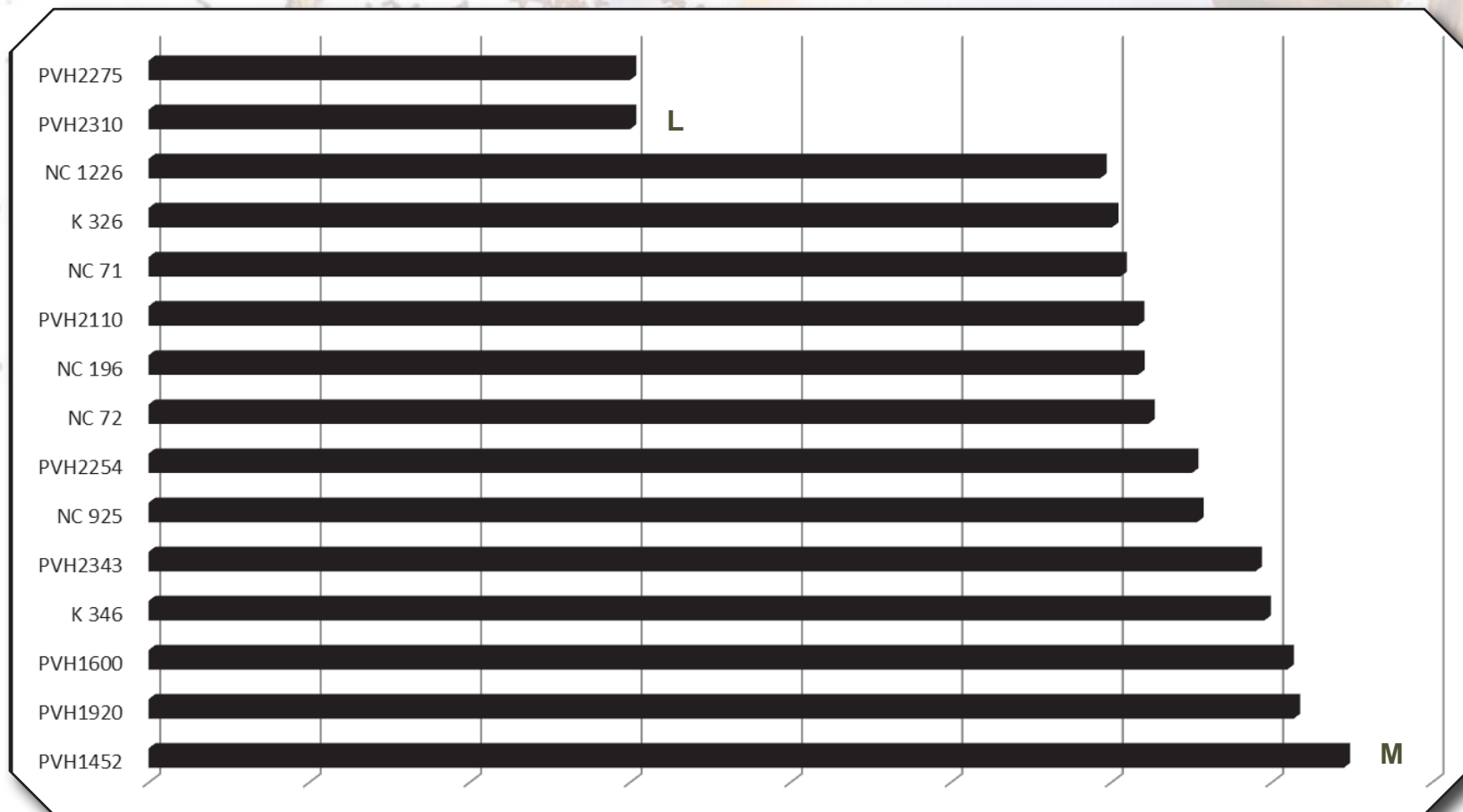
BLACK SHANK RACE 1 TOLERANCE



H – High tolerance
M – Medium tolerance
L – Low tolerance

Source: 2019 Flue Cured Guide, NCSU and 2018 OVT

BACTERIAL WILT TOLERANCE



M – Medium tolerance

L – Low tolerance

Source: 2019 Flue Cured Guide, NCSU and 2018 OVT

WWW.SEEDWAY.COM



BE SOCIAL WITH US!

